

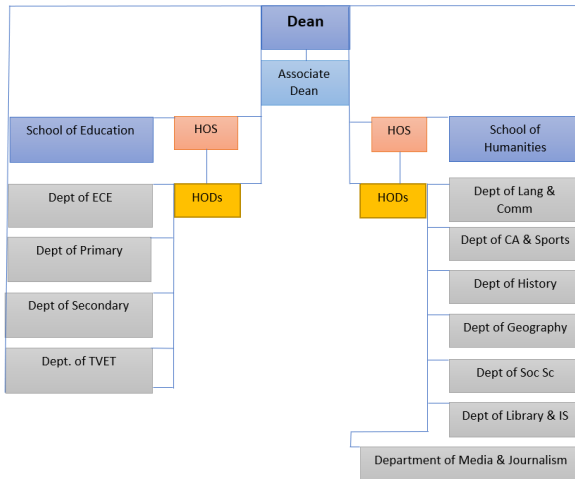
Certificate

Certificate in Education -Adult Learners Training Program (ALTP) Completion of any technical or professional qualification at Rural Technical Centres (RTC) OR Current teacher at RTC or Vocational centres.

Certificate in Journalism (HMCJ)

Completed Form 6 Arts/Science with minimum Aggregate of 18 and less OR Mature entry with 4 years relevant work experience in journalism and media. Support letter from employer recommended.

FACULTY STRUCTURE



TO APPLY FOLLOW THESE STEPS:

Go to our website www.sinu.edu.sb to download application forms and program offering/entry requirements.

OR Collect a hard copy of the application and course offerings from the Student Academic Services (SAS) office. Do fill out relevant sections, and submit with all required documents.

Completed forms must be submitted with all required documents and dropped off at SAS Office, Front Desk. Please note that there is an application fee of \$50.00 that is payable to the SINU BSP Account #: 9088870419 and this must be receipted at the SINU Finance Division before submitting applications.

Dean of Faculty

Dr Patricia Rodie

Address:

Faculty of Education and Humanities
Solomon Islands National University
Panatina Campus
P. O. Box R113
Honiara
Solomon Islands.



Faculty of Education and Humanities



2024 Course Information

Website: <https://www.sinu.edu.sb/feh/>

Phone: +677 42600

ENTRY REQUIREMENTS

Bachelors

Bachelor of Teaching (Primary) (EBPT)

Completed Form 7 Arts or Science or Foundation Studies with minimum GPA of 3.00 and above OR successful completion of Diploma of Teaching Primary with minimum GPA of 2.5 and above and has at least 3 years or more teaching experience with maturity. [Pass Standardize Entry Exam.](#)

Bachelor of Teaching (Secondary) (EBTS)

Completed Form 7 Arts or Science or Foundation Studies with minimum GPA of 3.00 and above OR successful completion of Diploma in Secondary Teaching in relevant subject area and has at least 3 years or more teaching experience and maturity. [Pass Standardize Entry Exam.](#)

Graduate Diploma in Education (Secondary) (EGDES)

Successful completion of Bachelor's Degree in any Field OR Mature Entry with more than 5 years of teaching experience.

Diplomas

Diploma of Teaching (Primary) (EDP)

Completion of Form 7 Arts/Science with minimum GPA of 3.00 and above OR Completion of Certificate in Primary Teaching with minimum GPA of 2.5 and above OR Mature entry with at least 3 years of Teaching experience. [Pass Standardize Entry Exam.](#)

Diploma of Teaching (Early Childhood) (EDEC)

Completed Form 7 Arts/Science with minimum GPA of 3.00 and above OR Completed UPCIV with minimum GPA of 2.5 and above OR Completed Certificate in Teaching Early Childhood with minimum GPA of 2.00 and above OR Mature Entry with 3 or more years of teaching experience. [Pass Standardize Entry Exam.](#)

Diploma of Teaching (Secondary) Business (EDBS)

Completed Form 7 Arts/Science with minimum GPA of 3.00 and above OR Completed UPCIV with minimum GPA of 2.5 and above OR Completed Diploma in Business studies with minimum GPA of 2.00 and above OR Mature Entry with 3 or more years of work experience. [Pass Standardize Entry Exam](#)

Course Information



The Faculty of Education and Humanities (FEH) is the largest Faculty within the Solomon Islands National University (SINU) organisational structure. It comprises of two schools and eleven departments. The School of Education (SOE) is the premier teacher education institution in the Solomon Islands and it mainly offers teacher education programmes for pre-service and in-service teachers from early childhood through to secondary education level. The School of Humanities (SOH) currently offers art-related courses that service the teacher education programmes offered by SOE. Other programmes offered through SOH include certificate programmes in media and journalism, and library and information systems. SOH is in the process of developing degree programmes.

Mission

To prepare teachers and individuals who will develop professional leadership knowledge and skills, demonstrate academic and professional excellence, have sound personal qualities, demonstrate commitment towards education and lifelong learning, and become socially responsible citizens of Solomon Islands.



Diploma of Teaching (Secondary) English (EDEN)

Completed Form 7 Arts/Science with minimum GPA of 3.00 and above OR Completed UPCIV with minimum GPA of 2.5 and above OR Mature Entry with 3 or more years of work experience. [Pass Standardize Entry Exam.](#)

Diploma of Teaching (Secondary) Home Economics (EDHE)

Completed Form 7 Arts/Science with minimum GPA of 3.00 and above OR Completed UPCIV with minimum GPA of 2.5 and above OR Mature Entry with 3 or more years of work experience. [Pass Standardize Entry Exam.](#)

Diploma of Teaching (Secondary) Health & Physical Education (EDHPE)

Completed Form 7 Arts/Science with minimum GPA of 3.00 and above OR Completed UPCIV with minimum GPA of 2.5 and above OR Mature Entry with 3 or more years of work experience. [Pass Standardize Entry Exam.](#)

Diploma of Teaching (Secondary) Mathematics (EDMA)

Completed Form 7 Arts/Science with minimum GPA of 3.00 and above OR Completed UPCIV with minimum GPA of 2.5 and above OR Mature Entry with 3 or more years of work experience. [Pass Standardize Entry Exam.](#)

Diploma of Teaching (Secondary) Science (EDSC)

Completed Form 7 Arts/Science with minimum GPA of 3.00 and above OR Completed UPCIV with minimum GPA of 2.5 and above OR Mature Entry with 3 or more years of work experience. [Pass Standardize Entry Exam.](#)

Diploma of Teaching (Secondary) Social Studies (EDSS)

Completed Form 7 Arts/Science with minimum GPA of 3.00 and above OR Completed UPCIV with minimum GPA of 2.5 and above OR Mature Entry with 3 or more years of work experience. [Pass Standardize Entry Exam.](#)

Diploma of Teaching (Secondary) Technology (EDT)

Completed Form 7 Arts/Science with minimum GPA of 3.00 and above OR Completed UPCIV with minimum GPA of 2.5 and above OR Mature Entry with 3 or more years of work experience. [Pass Standardize Entry Exam.](#)

Diploma of Youth and Development Work (DYD)

Completed Form 7 Arts/Science with minimum GPA of 3.00 and above OR Completed UPCIV with minimum GPA of 2.5 and above OR Mature Entry with 3 or more years of work experience in community development or Social Work.